

Attaching a Product to a Formula

This article provides instructions on how to attach a product to a formula.

This tutorial will show you how to link a Formula (Recipe) to a Product.

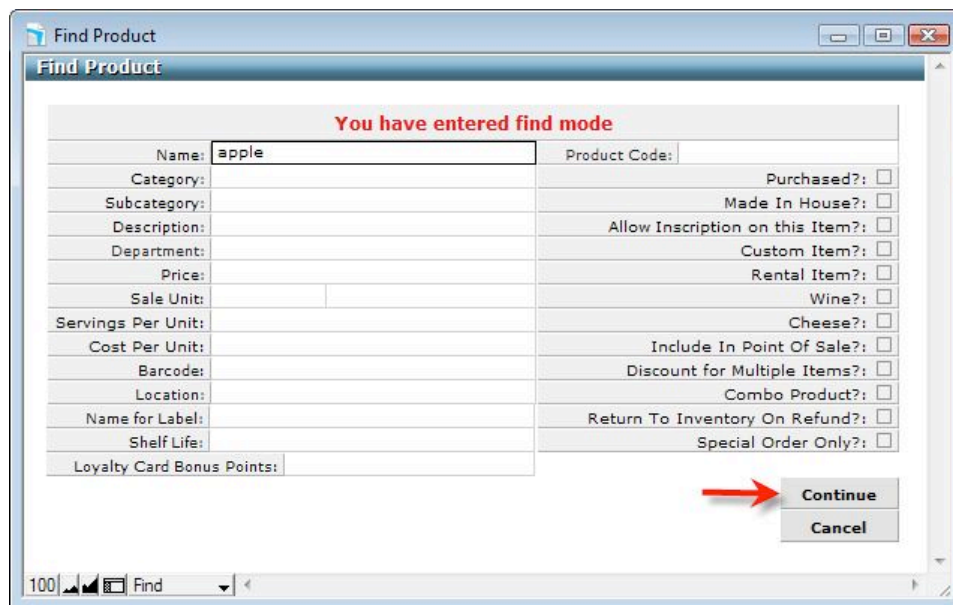
(**Note:** Please see *Creating a Product* and *Creating A Formula* if you do not have any Products or Formulas entered into your installation of BakeSmart.)

In this instance we will be linking the formula for "Apple Pie" to the product "Apple Pie".

From the BakeSmart home page select "Products" then "Find Product."



Enter the search term that corresponds with the Product you are looking for. We will enter "apple" to find all Products with the word "apple" in the title. Click the "Continue" button after you have entered your search terms.



In this case our search has returned 2 Products with the word apple in the name. We are going to choose "Apple Pie" by clicking on the name in the search results.

| Item Name | Category |
|-------------------------|----------|
| ▶ Fruit (Apple, Orange) | Deli |
| ▶ Apple Pie ← | Pies |

This brings us to the "Product Form View" for the Product "Apple Pie."

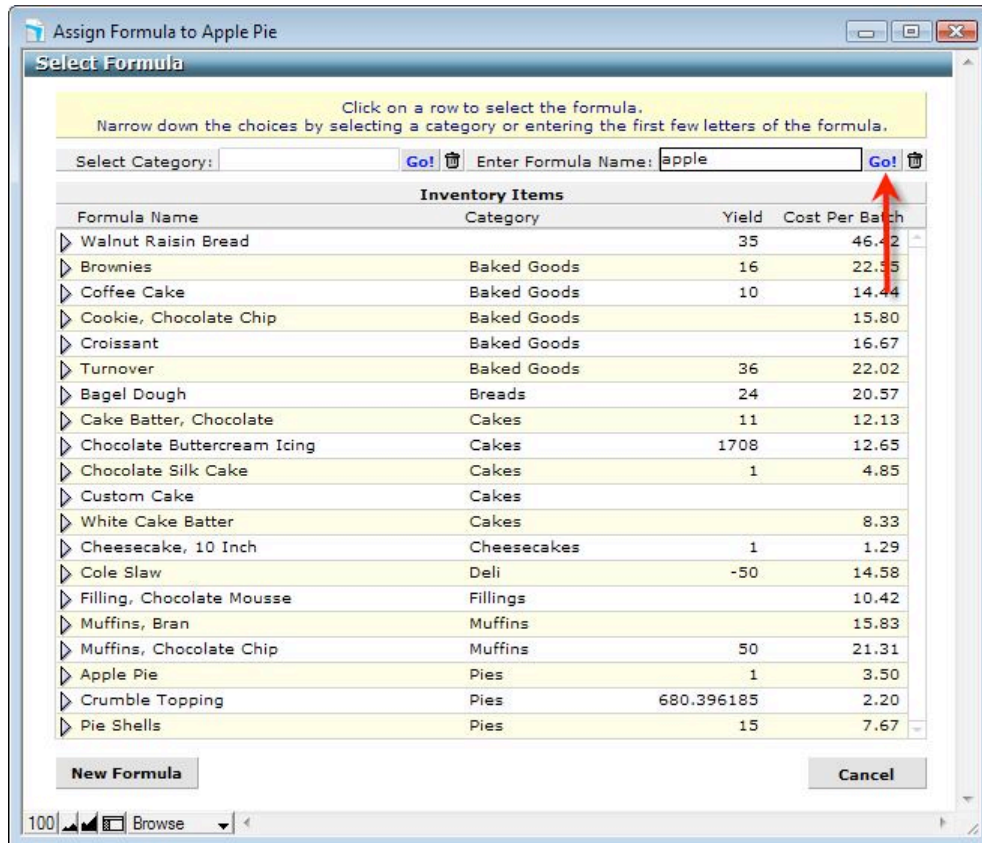
We want to tick the check box next to the option "Made in House?" and click the "More..." button.

| | |
|---|----------------|
| Purchased?: <input type="checkbox"/> | |
| Made In House?: <input checked="" type="checkbox"/> | More... |

After clicking the "More.." button we are presented with the "Apple Pie Formula Information" screen.

To associate a Formula with the Product "Apple Pie" we need to click the "Change" button in the Formula Information screen.

We are now prompted to select a Formula. Using the search function at the top enter a partial or full formula name and press the "GO!" button to view available formulas.



After selecting the Formula "Apple Pie" by clicking once on the search result, the Formula "Apple Pie" has been associated with the Product "Apple Pie".

The screenshot shows a software window titled "Formula Information" with a sub-header "Apple Pie - Formula Information". The window is divided into several sections:

- Change** (tab):
 - Formula Information** section:
 - Formula Name: Apple Pie
 - Batch Yield: 1 pie
 - Serving Size: pie
 - Servings Per Unit: 12
 - Production Settings** section:
 - Include This Product In Production:
 - Group This Product With: Apple Pie
 - Low Inventory Alert Level: pie
 - More... button
- + New** (tab):
 - Add-ons and Packaging** section:

| Item | Unit | Cost |
|-----------------|--------|------|
| Pie Plate, Foil | 1 Each | .44 |
| | | |
| | | |
| | | |

Buttons: "Edit All", "More...", "Close".

Finally, click the "Close" button to return to the "Product Form View".

The Formula "Apple Pie" has now been associated with the Product "Apple Pie".